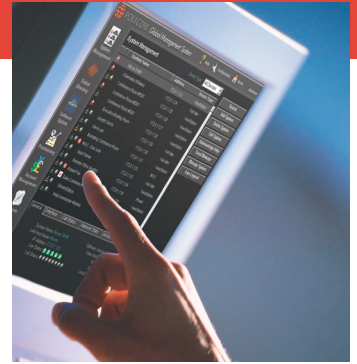


Polycom® Global Management System™

Features and Benefits



System Management	<ul style="list-style-type: none">• Control of video conferencing system• View real-time video network status• Manage video communication network devices• Manage Polycom audio conference phones
Global Directory	<ul style="list-style-type: none">• Zero Administration Directory Service• Centralized, server-based directory• Integrate with Polycom OneDial™ in Polycom PathNavigator™• E.164 Dialing
SoftUpdate	<ul style="list-style-type: none">• Perform immediate or scheduled updates on multiple Polycom devices at once
Provisioning	<ul style="list-style-type: none">• Create standard profiles of settings on video endpoints• Enables simplification of large video deployments
Call Detail Record and Account Management	<ul style="list-style-type: none">• Customer/department charge-back for video network usage
Complete Video Network Aggregation	<ul style="list-style-type: none">• Minimize time for network support• Reduce costs in maintaining video conferencing infrastructure
Remote Alert Notification	<ul style="list-style-type: none">• Receive email/pager messages remotely for 24x7 troubleshooting
Multiple Security Permissions	<ul style="list-style-type: none">• Create individual administration and group permission levels and access
Third Party endpoint support	<ul style="list-style-type: none">• Manage and monitor any video endpoint device that has an embedded Web server
Web-browser interface	<ul style="list-style-type: none">• Allow administrator access from any networked computer• Intuitive and easy to use
LDAP Compliant	<ul style="list-style-type: none">• Standard directory structure support enables data sharing between enterprise applications
SNMP Compliant	<ul style="list-style-type: none">• Support SNMP traps on events from Polycom video endpoint devices





Polycom Headquarters:

4750 Willow Road, Pleasanton, CA 94588 (T) 1.800.POLYCOM (765.9266) for North America only.
For North America, Latin America and Caribbean (T) +1.925.924.6000, (F) +1.925.924.6100

Polycom EMEA:

270 Bath Road, Slough, Berkshire SL1 4DX, (T) +44 (0)1753 723000, (F) +44 (0)1753 723010

Polycom Asia Pacific:

Polycom Hong Kong Ltd., Rm 1101 MassMutual Tower, 38 Gloucester Road, Wanchai, Hong Kong, (T) +852.2861.3113, (F) +852.2866.8028

Rev. 6/04

© 2004 Polycom, Inc. All rights reserved.

Polycom and the Polycom logo are registered trademarks and Global Management System, Polycom PathNavigator and Polycom OneDial are trademarks of Polycom, Inc. in the U.S. and various countries.

All other trademarks are the property of their respective companies. Specifications are subject to change without notice.