



Polycom® Video Border Proxy 4350 Converged Network Appliance



Benefits

Enhanced network security

- Seamless resolution to challenges of communicating through firewalls
- Application layer gateway for H.323 video, SIP, and MGCP voice
- Dynamic access control list for simplified set-up and operation

High quality video communication

- Video and voice media routing via shortest possible path
- Call entry control to prevent congestion of prioritized traffic
- Traffic management capabilities including priority queuing, traffic shaping, and diffserv marking/policing
- Support for up to 3 Mbps of voice, video, or data traffic in any combination

Simplified deployment and use

- All-in-one network traversal solution for voice, video, and data networks
- Both T1 (4350 only) and Ethernet WAN access router
- Integrated four-port managed Ethernet switch with VLAN support
- Embedded LAN side gatekeeper supporting up to 15 registrants

The Polycom Video Border Proxy (VBPTM) 4350 network appliance allows your organization to conduct video conferences clearly and securely by resolving the challenges caused by firewalls.

Users of standards-based video endpoints, such as the high definition Polycom HDX 4000™ and Polycom HDX 7000™ series, can now remotely and securely communicate over video on the enterprise network.

By performing video NAT at the IP address boundary, the VBP 4350 network appliance eliminates the risks of tunneling video and voice traffic from the network perimeter. With both an Ethernet WAN port and a software-selectable integrated T1 CSU/DSU interface, the VBP 4350 appliance can be utilized as a WAN access router or installed behind an existing WAN access router. The VBP 4350W model also includes 802.11 (b & g) wireless connectivity with other network devices.

The VBP 4350 appliance employs a stateful packet inspection firewall, in combination with an application layer gateway, which determines when to open or close TCP and UDP ports for video and voice endpoints. To maximize video and voice quality, the VBP 4350 appliance forwards video traffic via the shortest possible path, effectively minimizing jitter, delay, and packet loss.

Bandwidth unused by video or voice is made available to boost WAN bandwidth and enable data traffic to burst at full line rate. To ensure control over video and voice quality, the VBP 4350 appliance also possesses traffic management capabilities such as prioritization, traffic shaping, call entry control, and diffserv marking/policing.

Make Great Things Happen with the Polycom VBP 4350 Series Converged Network Appliance

In today's Internet driven world, the ability to conduct real time communication and collaboration has become critical to an organization's survival. As the market leader in voice, video and content collaboration and communications, our award-winning conference technology makes it easy for people to interact and maximize productivity – over any network, in just about any environment, anywhere around the globe. That's why more organizations worldwide use and prefer Polycom conferencing solutions. Because when people work together, great things happen. See how you too, can achieve great things with the Polycom VBP 4350 series converged network appliance.



VideoVoiceDataWeb

Polycom VBP 4350 Converged Network Appliance Specifications

WAN Interfaces

T1 (not available on VBP 4350W model)

- Framing: ESF
- Line coding: B8ZS
- Line build out: 0,-7.5,-15dB

T1 is not available in all countries. Consult the Polycom price List for country availability.

Ethernet

- 10/100 Mbps
- Auto-sensing, full or half duplex

WAN Protocols

- PPP
- Frame relay
- HDLC

LAN Interfaces

- 4 x 10/100 Mbps Ethernet ports
- Auto-sensing, full or half duplex
- Managed switch supports VLAN 802.1Q tagging and forwarding for up to 16 unique VLAN ids

Wireless (VBP 4350W only)

- 802.11 (b & g)

Hardware

Dimensions

- Height 1.7", Width 10", Depth 7"
- Weight: 2 lbs.

Power

- External power brick: 12V, 3.0A

Regulatory

- FCC Part 15 (Class B) and Part 68, UL, cUL, CE, Industry Canada ICES-003 and IC-CS03

Management

- HTTP, HTTPS, SSH, Telnet, SNMPv1/v3
- Syslog support

Software Features

Video and Voice

- SIP, MGCP and H.323 application layer gateway enables a single public IP address to be used for multiple endpoints
- Shortest path routing for media optimizes video and voice quality
- Embedded LAN side gatekeeper supporting up to 15 registrants

QoS

- Class based queuing/prioritization
- Diffserv marking and policing
- Traffic shaping
- Video and voice call admission control prevents oversubscription of priority queue

Security

- Stateful packet inspection firewall
- Application layer gateway dynamically provisions and closes UDP ports used for video and voice calls
- IPSec: 3DES, SHA-1
- NAT/PAT server hides enterprise LAN topology
- VPN AES 128

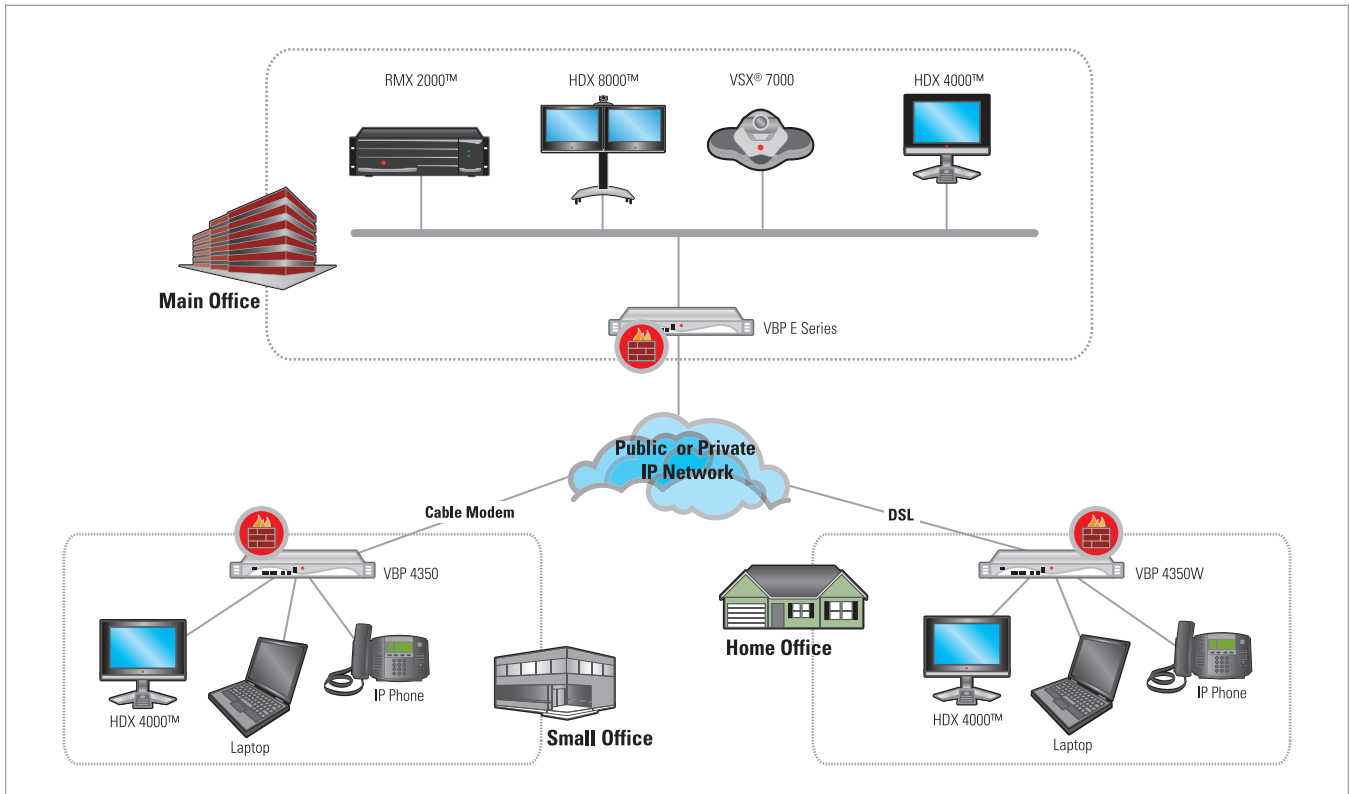
Passive Call Quality Monitoring (voice only)

- Per call statistics include mean opinion score (average and minimum), jitter, latency, packet loss and much more
- Alarms for poor MOS scores
- Active call count indicators

Description

VBP 4350-E3 NAT/ firewall traversal unit includes a four-port 10/100 Ethernet switch, integrated T1 CSU/DSU WAN interface, or 1x 10/100 Ethernet WAN interface with capacity of 3 Mbps of traffic.

Polycom Video Border proxy (VBP) 4350 Series Model



©2008 Polycom, Inc. All rights reserved.

Polycom, the Polycom logo and VSX are registered trademarks and HDX 4000, HDX 7000, HDX 8000, RMX 2000 and VBP are trademarks of Polycom, Inc. in the U.S. and various other countries. All other trademarks are the property of their respective owners. Information in this document is subject to change without notice.



Polycom Headquarters:

4750 Willow Road, Pleasanton, CA 94588 (T) 1.800.POLYCOM (765.9266) for North America only.
For North America, Latin America and Caribbean (T) +1.925.924.6000, (F) +1.925.924.6100

Polycom EMEA:

270 Bath Road, Slough, Berkshire SL1 4DX, (T) +44 (0)1753 723000, (F) +44 (0)1753 723010

Polycom Asia Pacific:

8 Shenton Way, #11-01 Temasek Tower, Singapore 068811 (T) +65.6389.9200, (F) +65.6323.3022

Part No. 3726-17730-001 Rev. 04/08